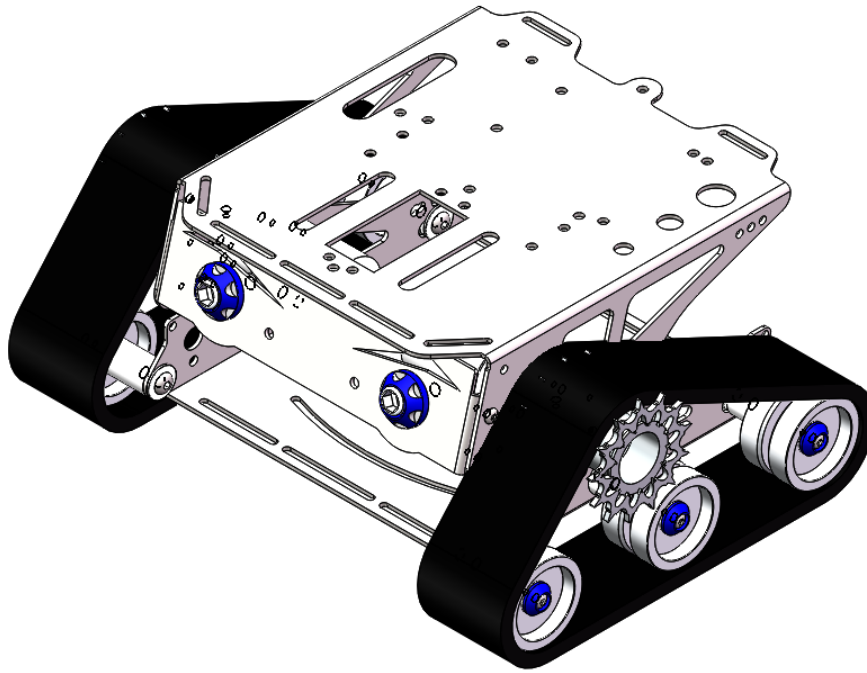


Keenlon Iron Man-4 Thacked Chassis

Mechanical Assembly Guide Revision 1.0



Safety first! Wear eye protection and never touch a powered robot!

Warning! Chassis is made of stainless steel with sharp edges, be careful!

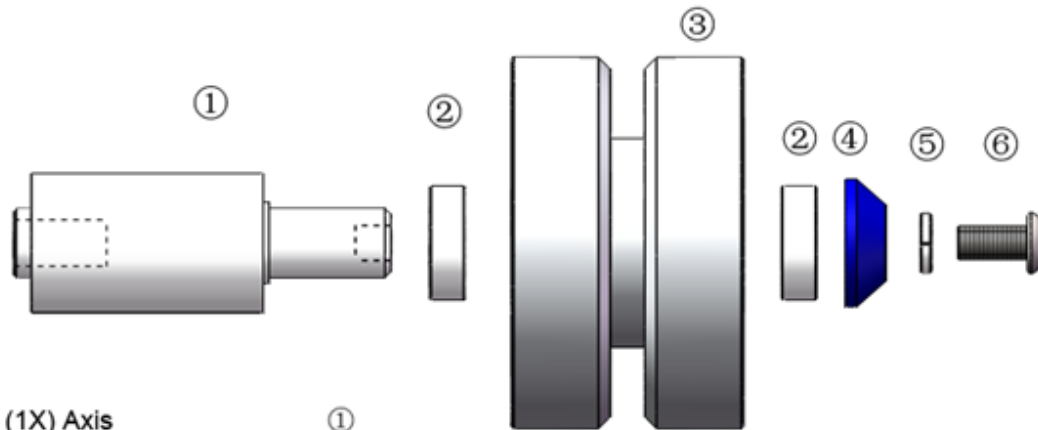
Design & Executive Shanghai Keenlon Hi-Tech Co., Ltd.

Service Techsupport@keenlon.com

Website www.keenlon.com

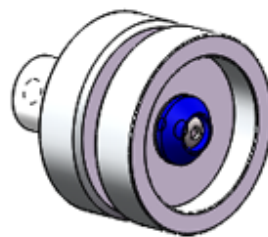
STEP 1A

Driven wheel Sub-assembly



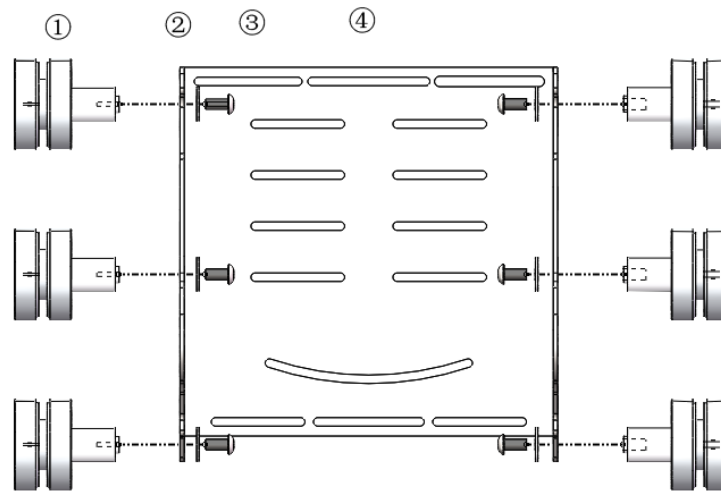
- | | |
|----------------------|---|
| (1X) Axis | ① |
| (2X) Berrings | ② |
| (1X) Wheel | ③ |
| (1X)Color Washers | ④ |
| (1X) Gasket | ⑤ |
| (1X)M3*8mm hex screw | ⑥ |

STEP 1B

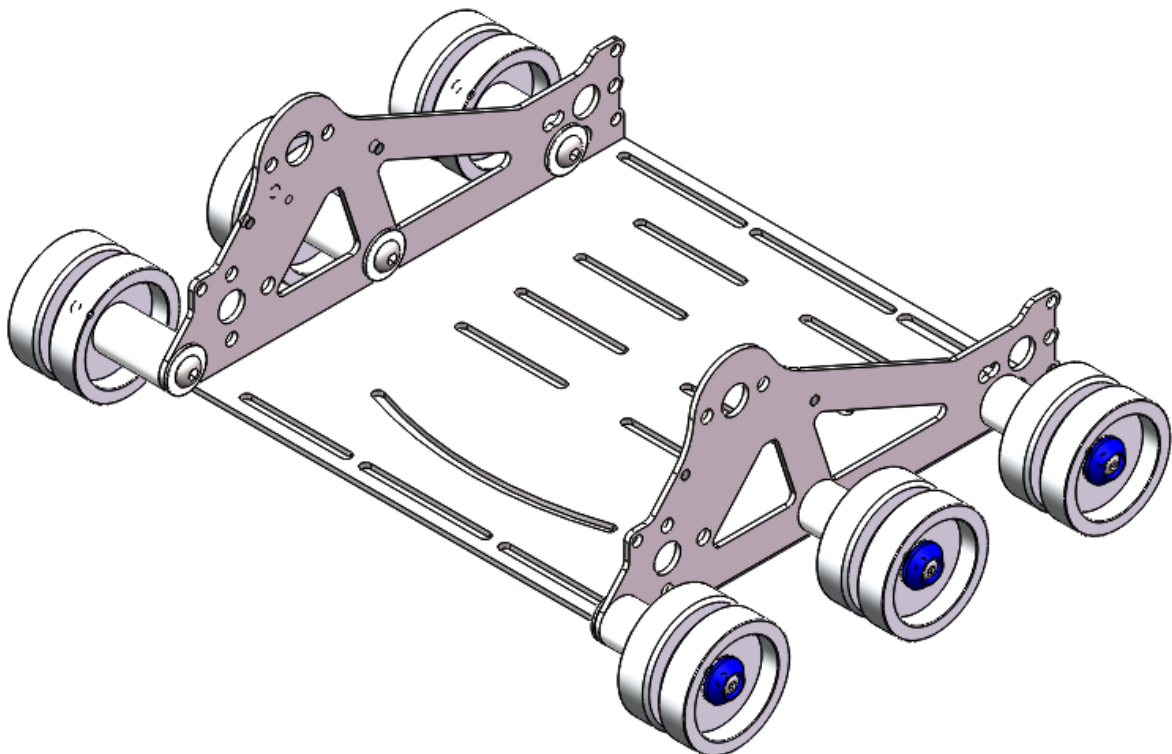


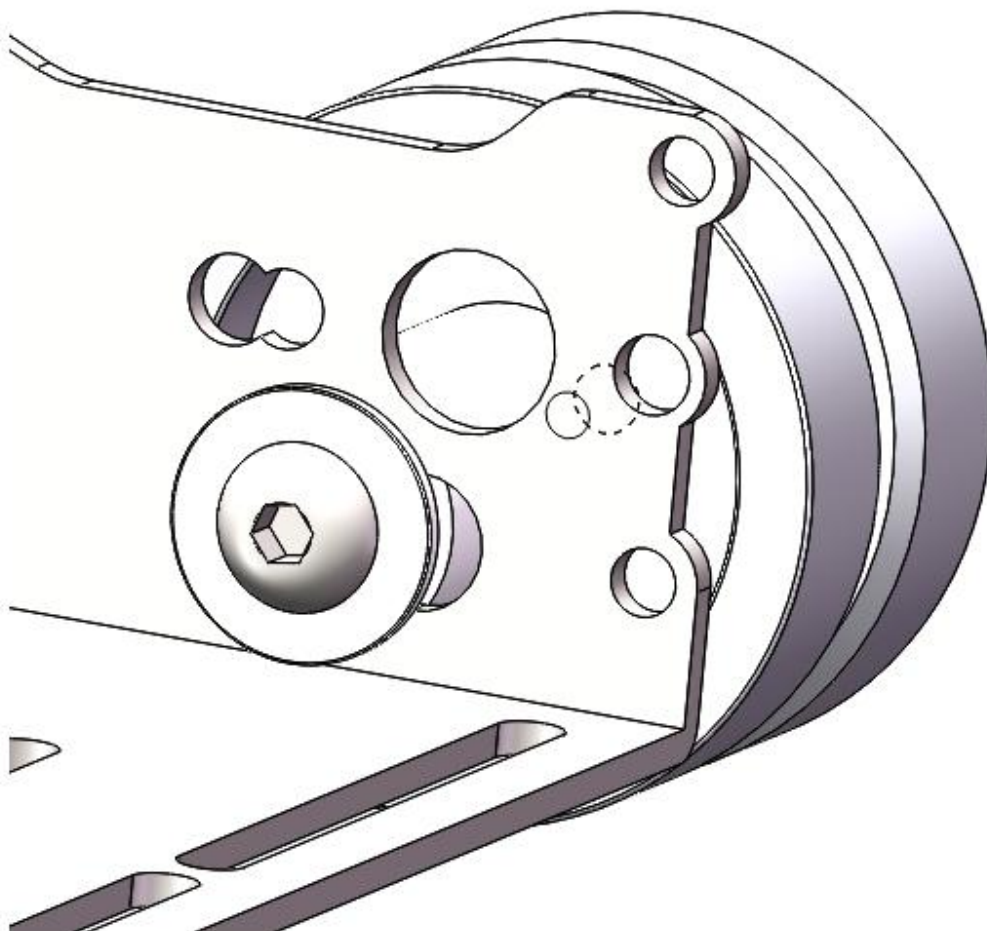
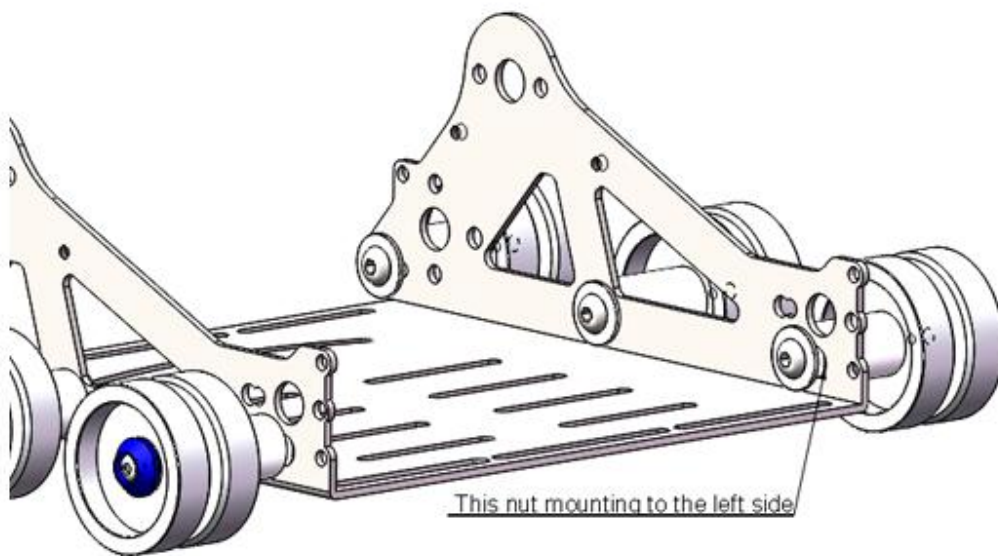
STEP 2A

Driven wheels Sub-assembly



- | | |
|------------------------|---|
| (6X) Driven wheels | ① |
| (6X) M4*1mm gasket | ② |
| (6X) M4*8mm hex screws | ③ |
| (1X) Chassis | ④ |



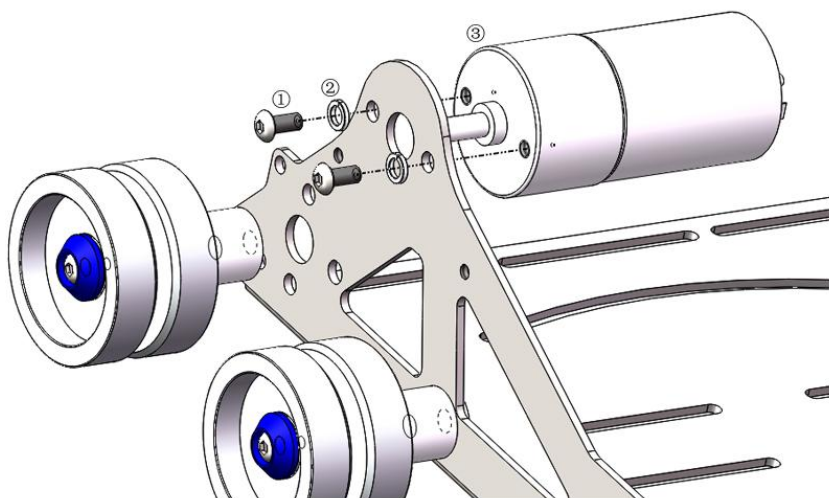


NOTE: This is a "secret screw". Do not tighten the screw too much now!

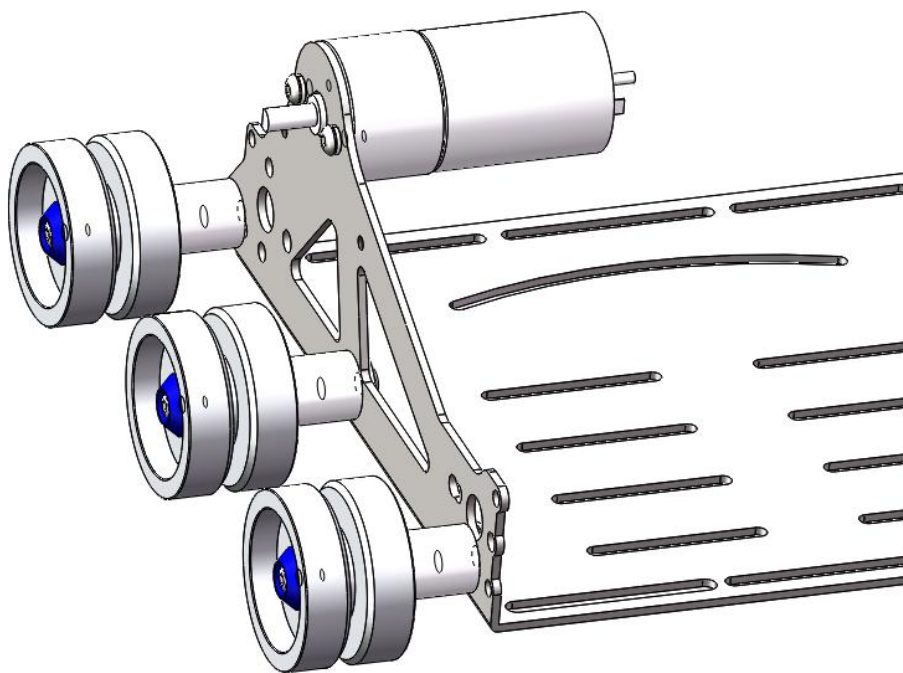
- (2X) M3*6mm hex screws ①
- (2X) M3*1mm gasket ②
- (1X) Gear motor ③

STEP 3A(2X)

Gear Motor



STEP 3B(2X)

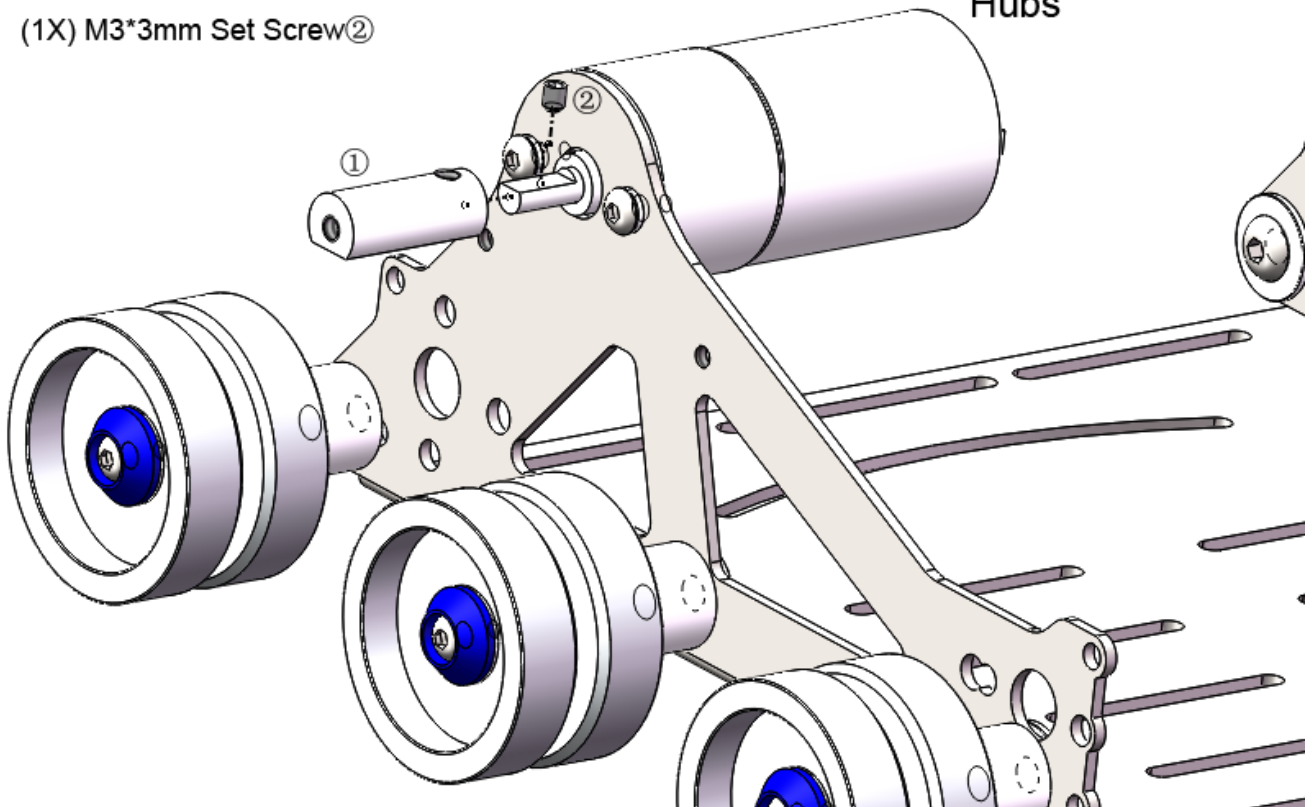


(1X) Motor Hub①

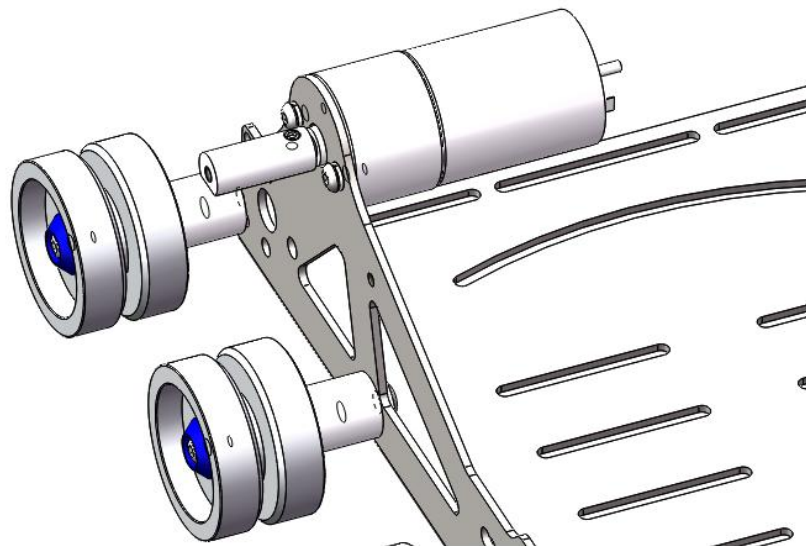
(1X) M3*3mm Set Screw②

STEP 4A(2X)

Hubs

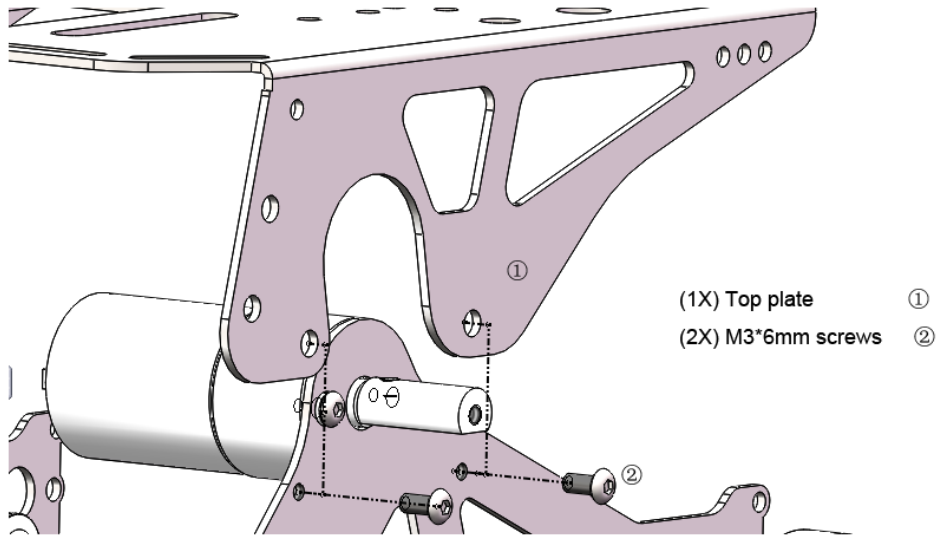


STEP 4B(2X)

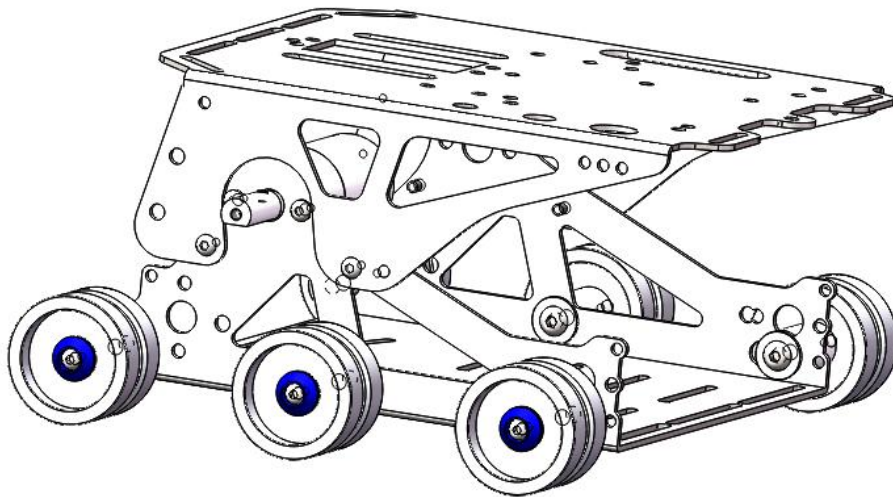


STEP 5A(2X)

Top Plate

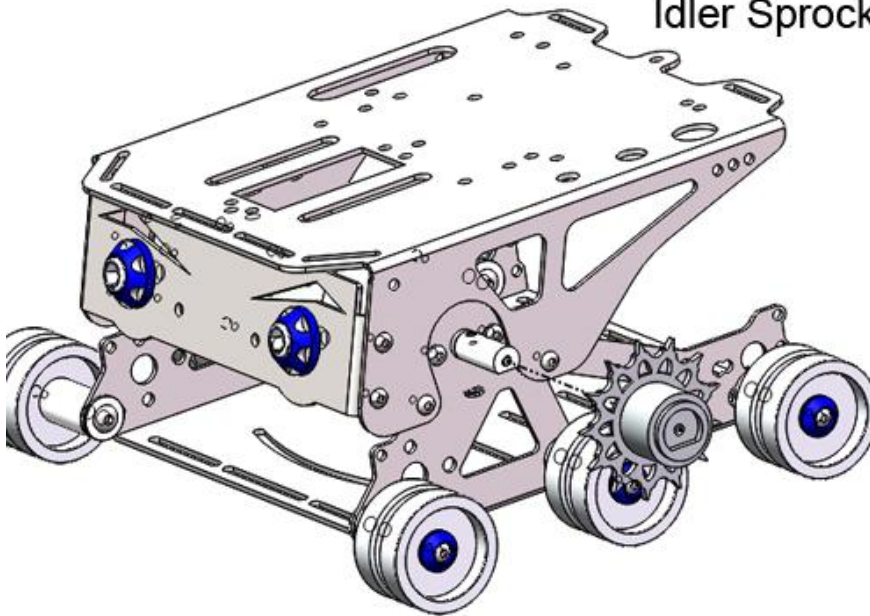


STEP 5B(2X)



STEP 6A(2X)

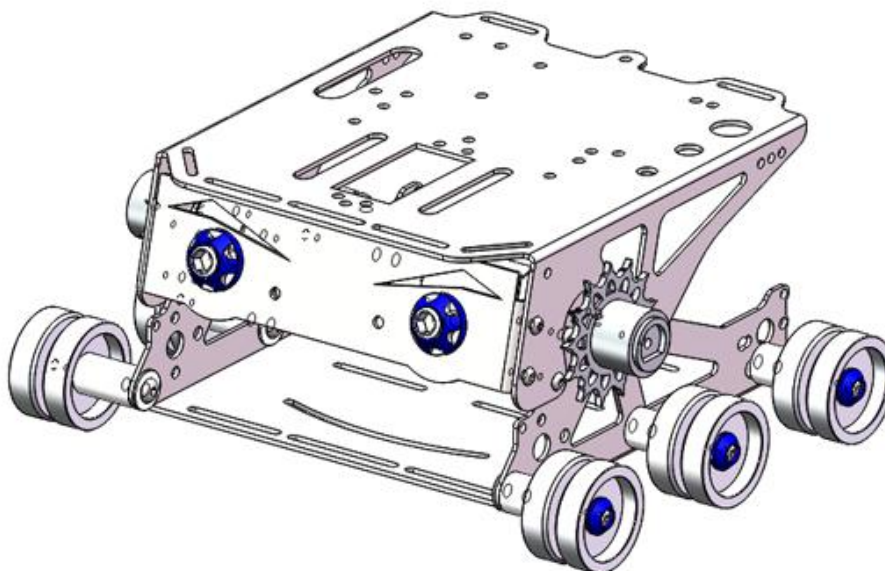
Idler Sprocket



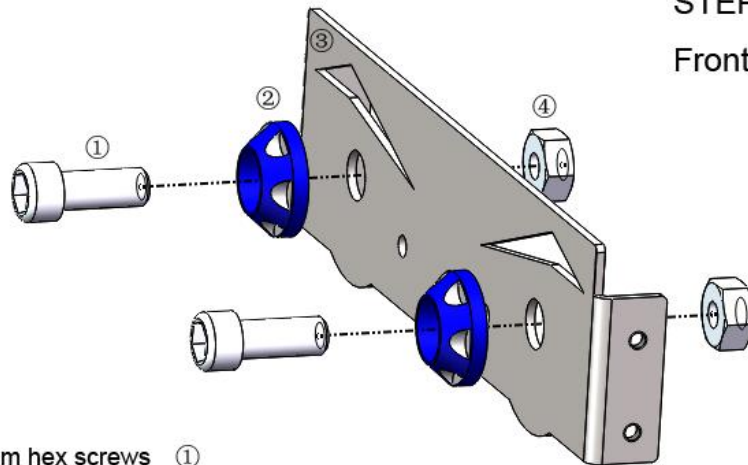
(1X) Idler sprock -A

①

STEP 6B

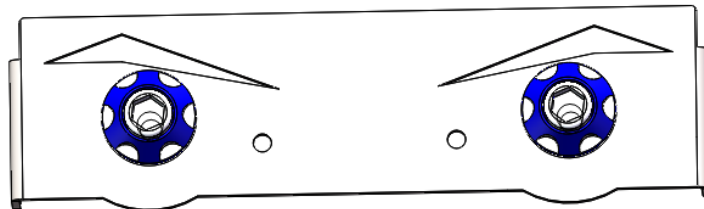


STEP 7A
Front Panel

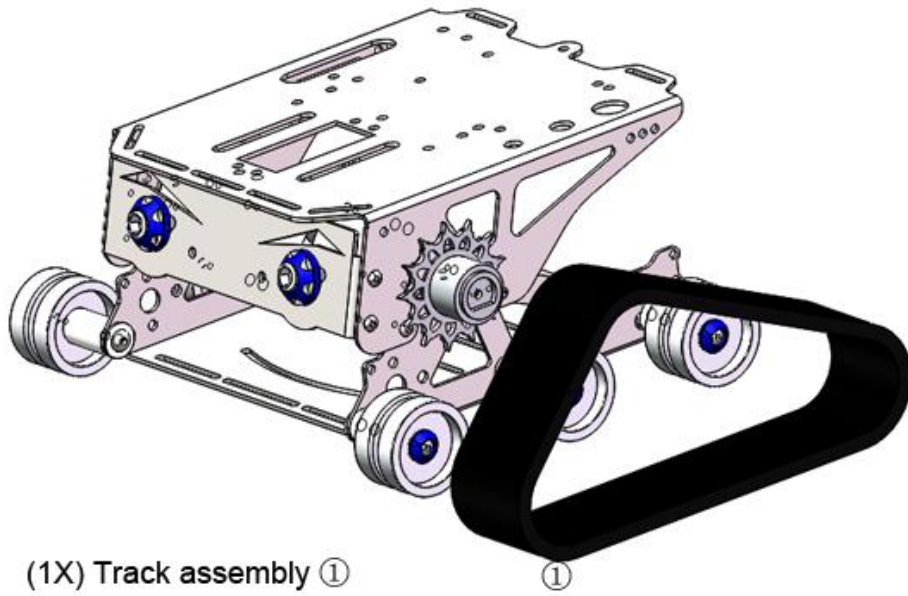


- (2X) M6*20mm hex screws ①
- (2x) color washers ②
- (1x) Front panel ③
- (2x) M6 lock nuts ④

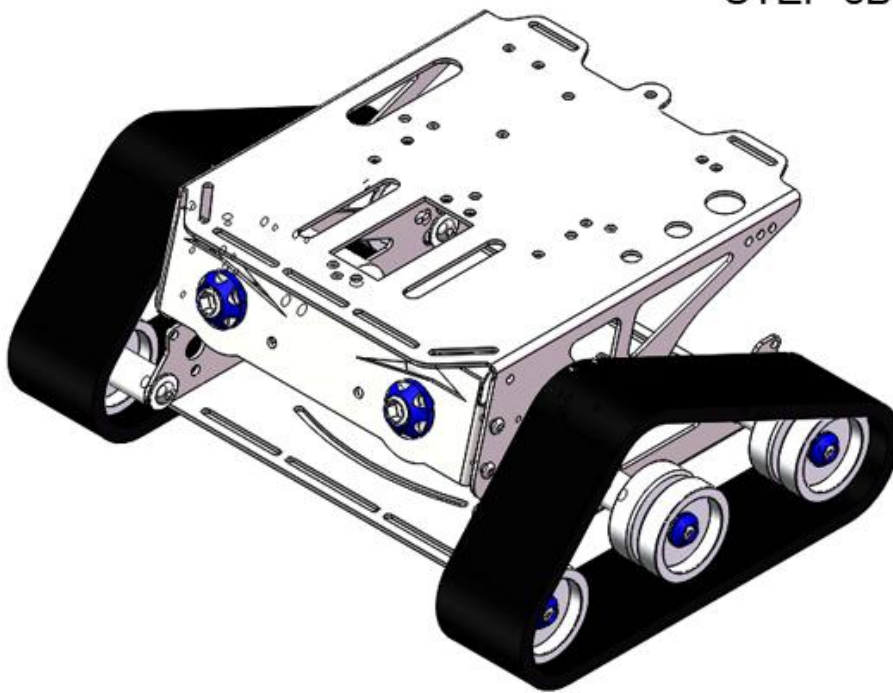
STEP 7B

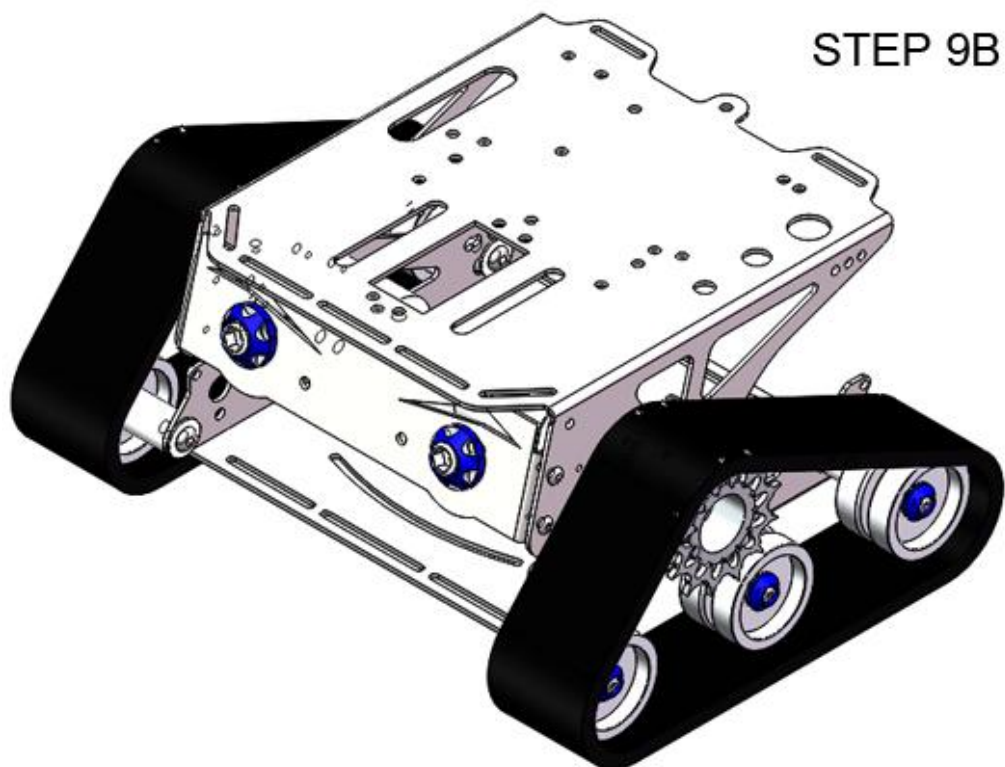
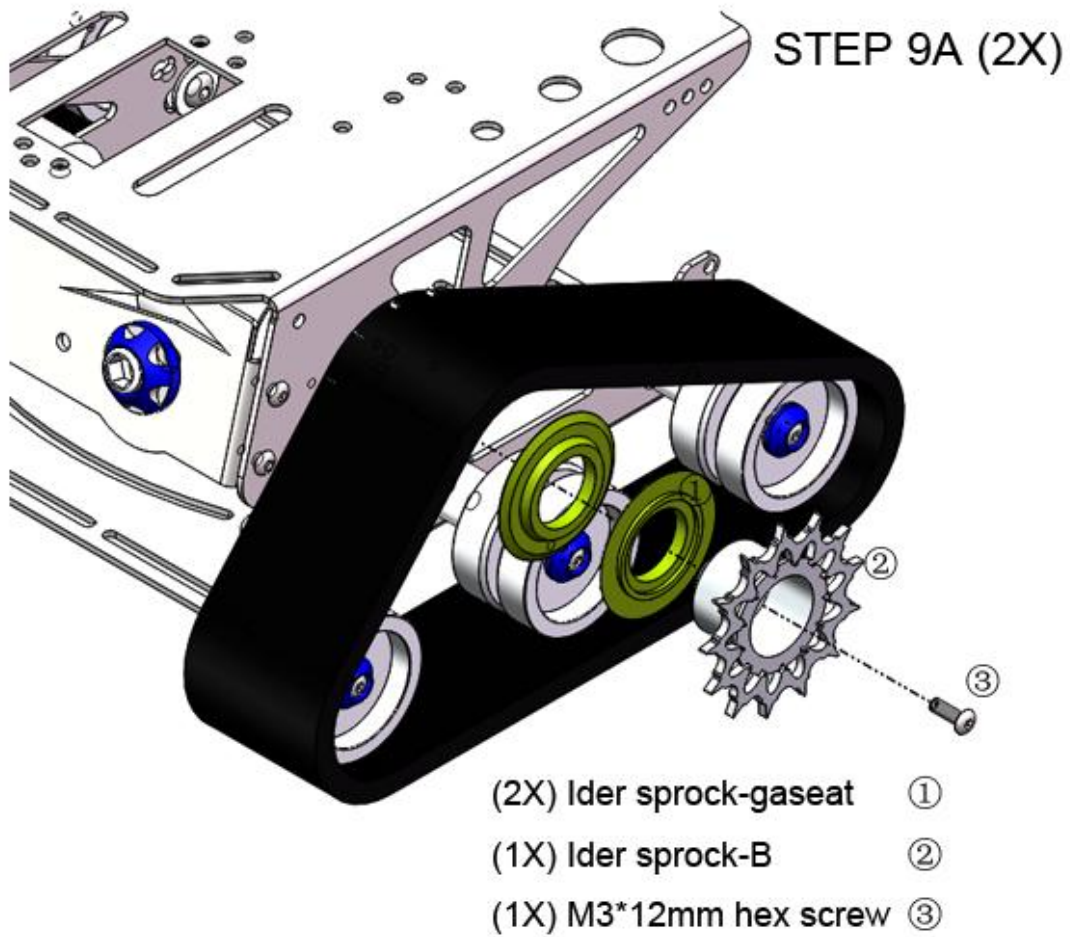


STEP 8A (2X)



STEP 8B





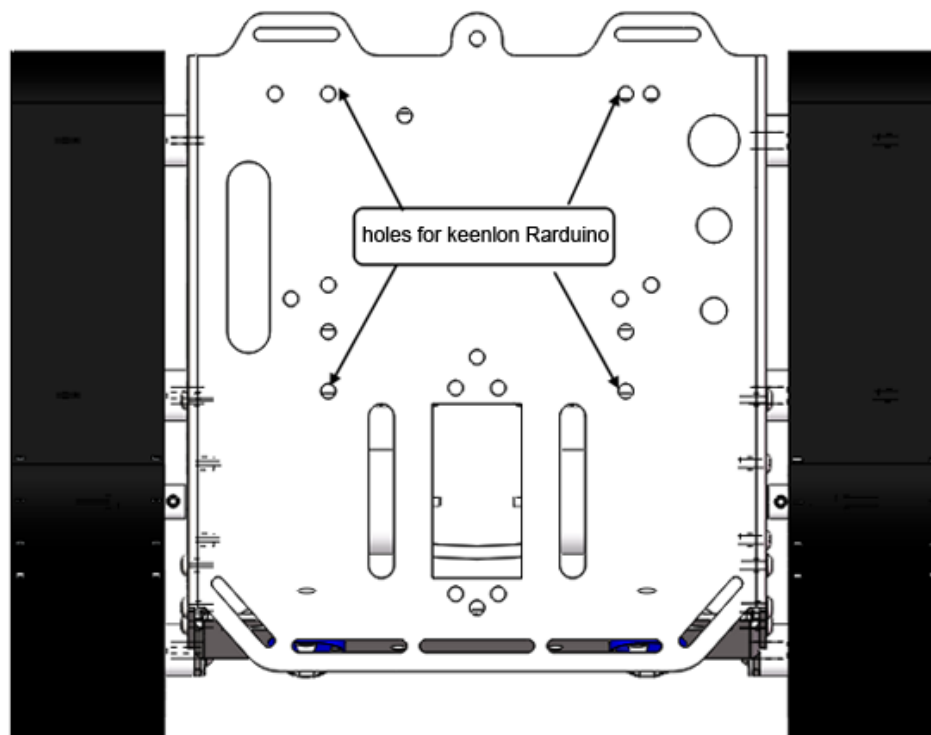
NOTE: Keep the middle of the track between the two ider sprock-gaseat.

NOTE: Adjust the position of the "secret screw" and keep the track a little tight.

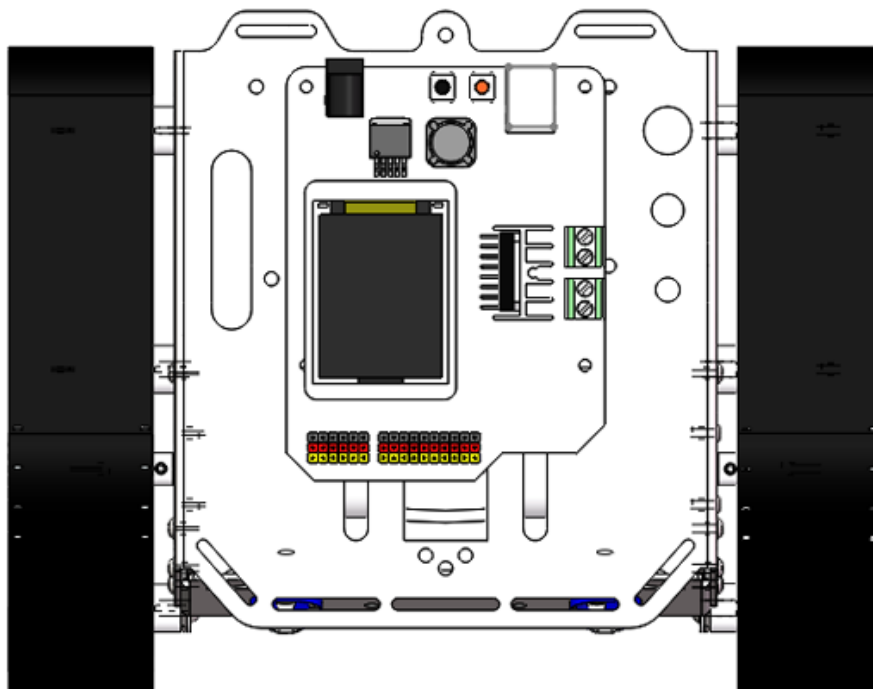
Complete!

Electronic Devices Setup Guide

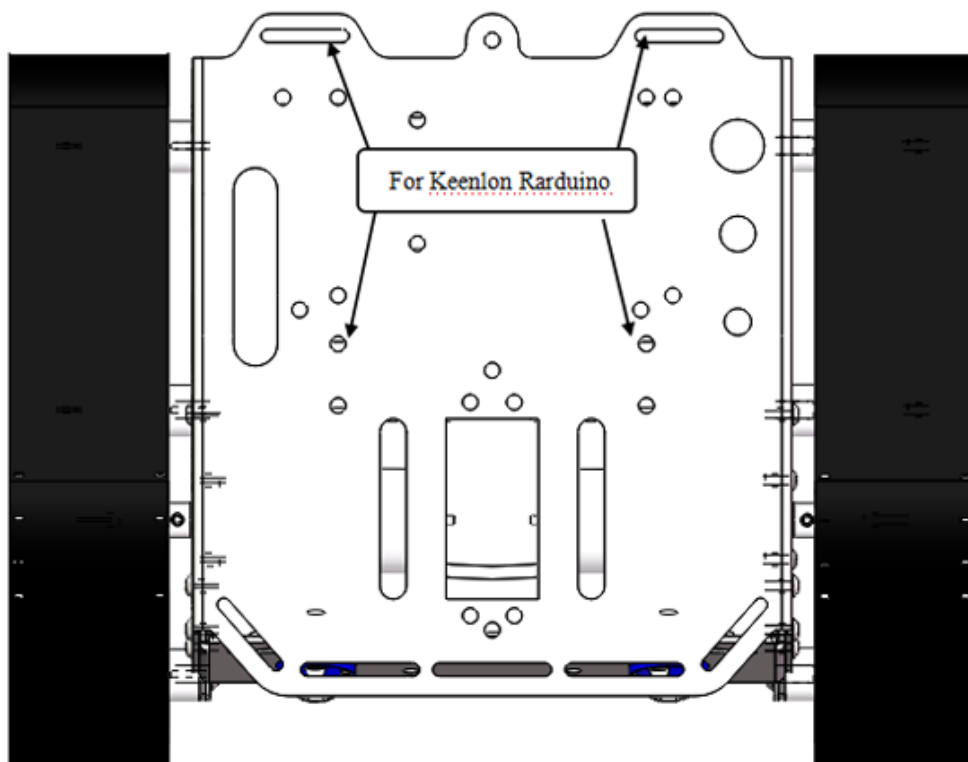
The first installation method



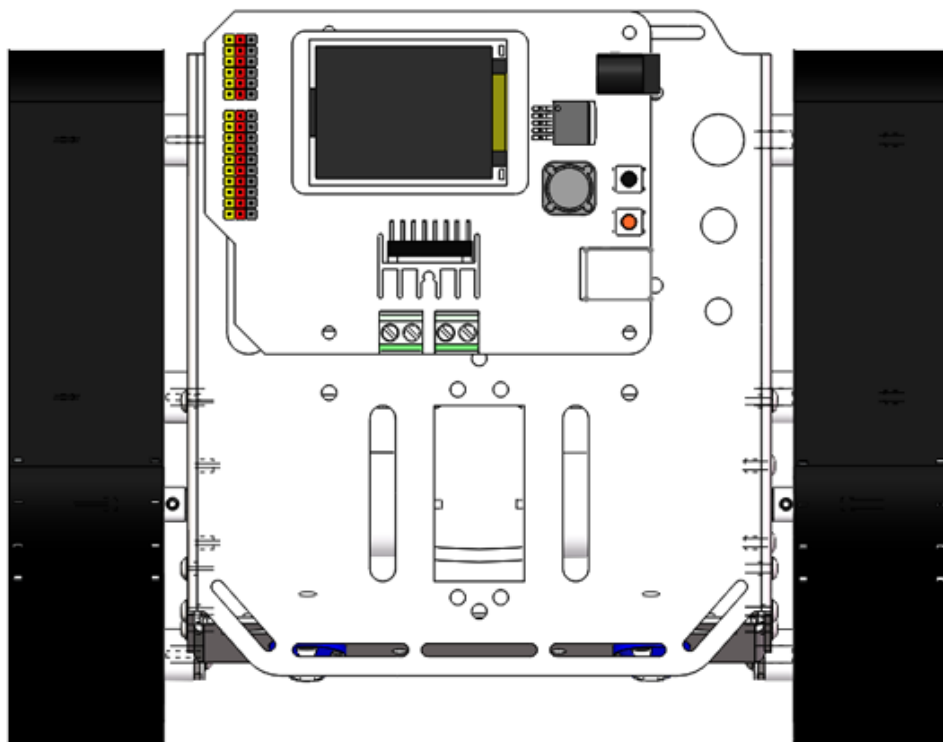
Top veiw

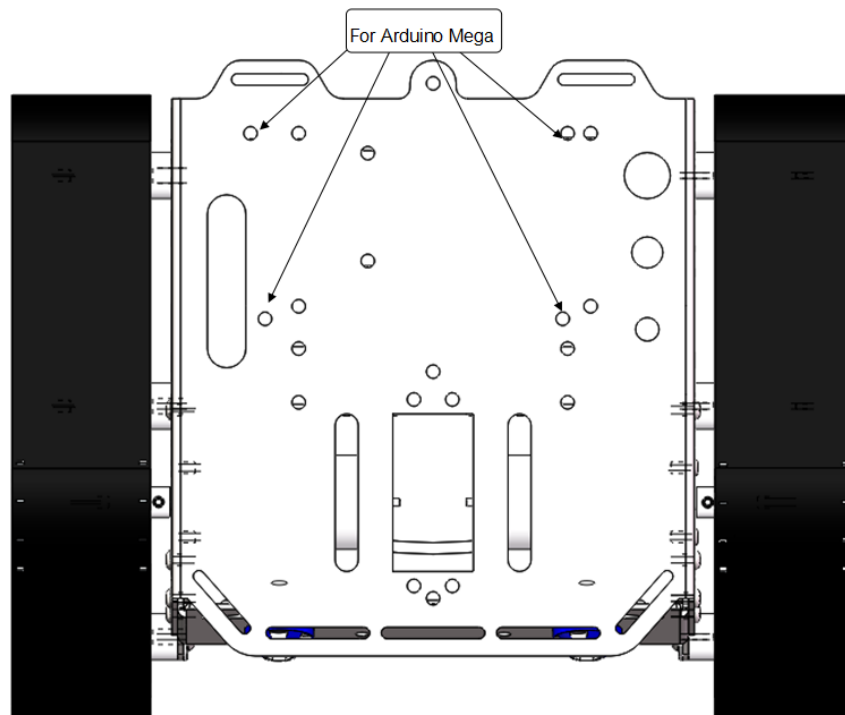


The second installation method

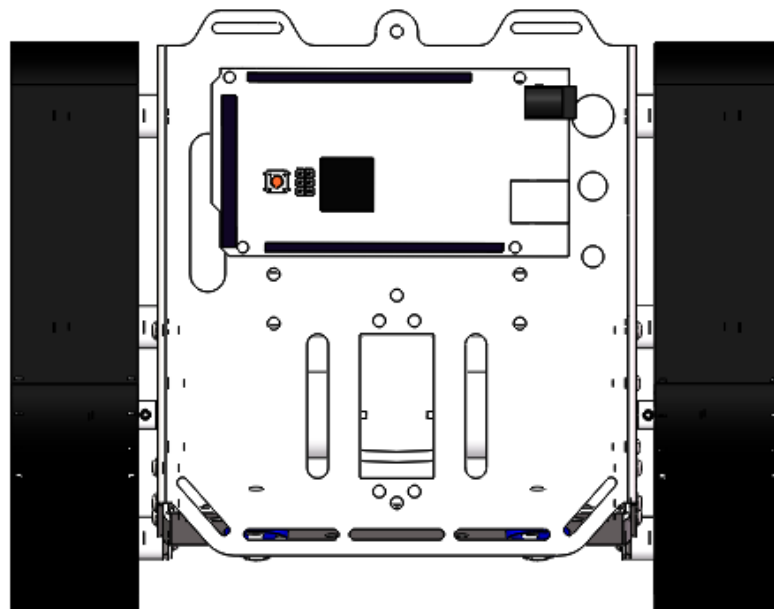


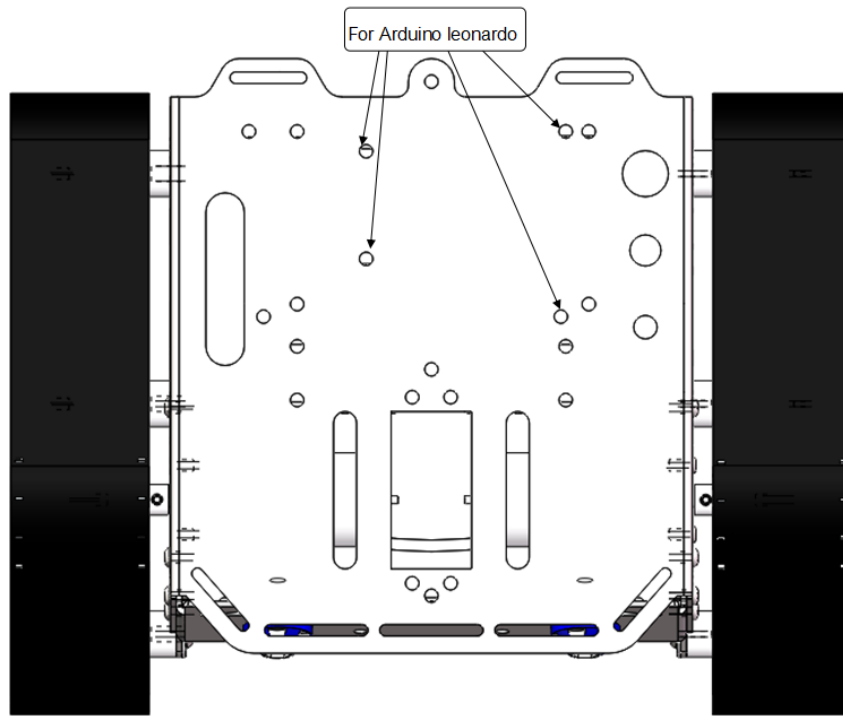
Top veiw



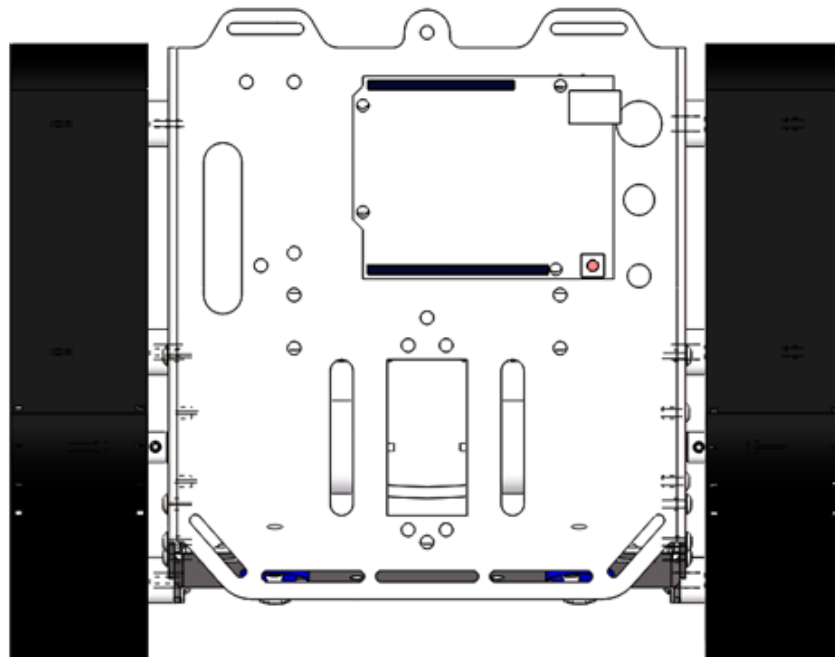


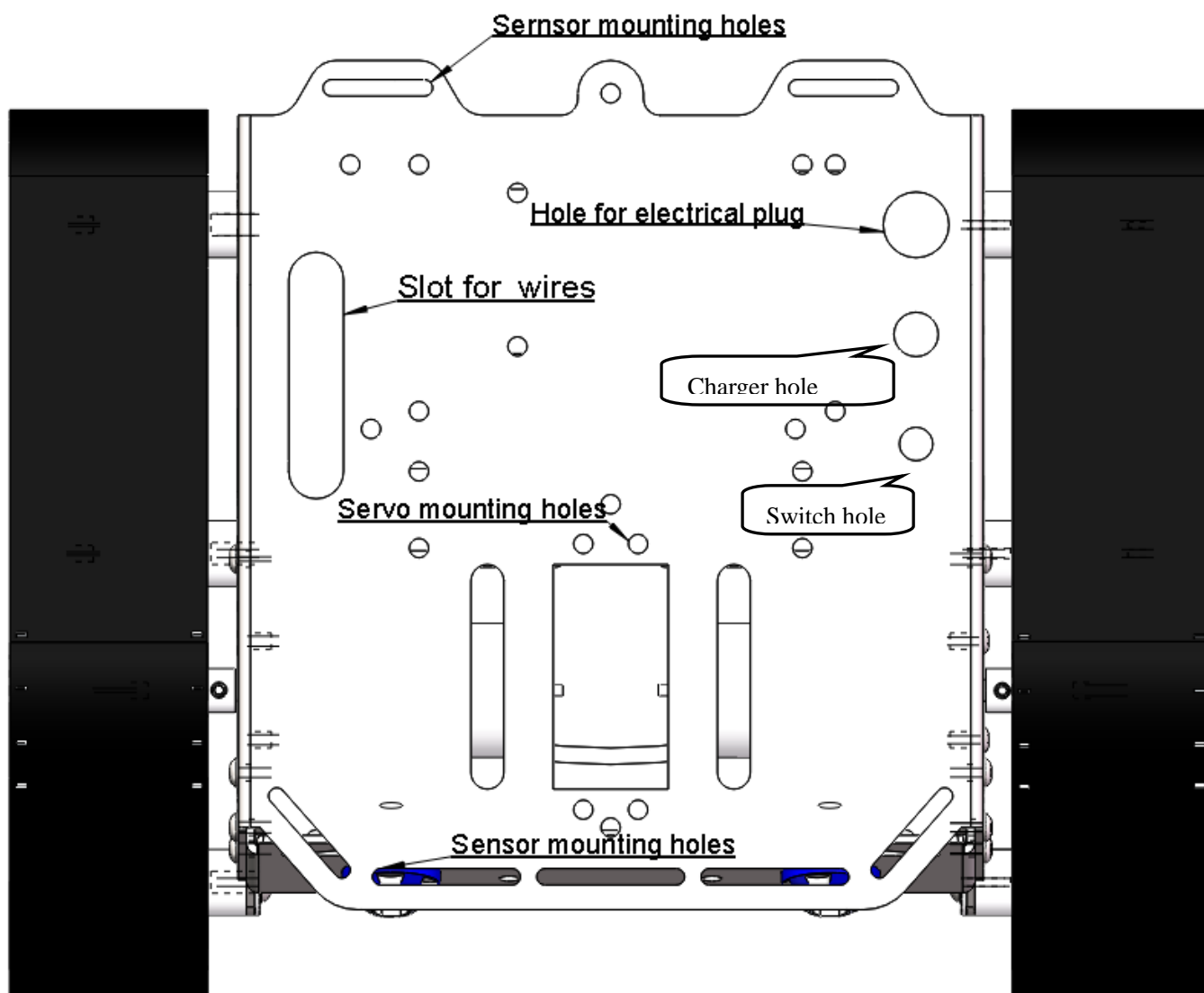
Mounting holes compatible with Arduino Mega





Mounting holes compatible with Arduino leonardo





DEMO

